

SOLAR SYSTEMS



HIGH LEVEL ENERGY



Kirano BATTERIES

Solarna energija
Čista energija

FREE ENERGY

OBNOVLJIVI IZVORI
ENERGIJE



SOLARNA BATERIJE - AKUMULATORI AGM VRLA / KIRANO - LEOCH

SOLARNE BATERIJE - AGM VRLA AKUMULATORI / PROIZVODNJA ELEKTRIČNE ENERGIJE

SOLARNE BATERIJE - KIRANO - LEOCH / AGM VRLA DCV 12 / Ah 100, 120, 200



GARANCIJA KVALITETA

VISOK NIVO ENERGIJE



LPC12-100



LEOCH LPC12-120 (12V120AH)
Maintenance-free Sealed Lead-acid Battery
Warning: Risk of fire, explosion, or burns. Do not disassemble, heat above the 50°C, or incinerate.
Pb. Pb.
LEOCH BATTERY CO.,LTD. MADE IN CHINA



KOMPONENTE ZA SOLARNI SISTEM - OFF GRID

"NEKA SUNCE FINANSIRA VAŠE RAČUNE"®

Sa našim dugogodišnjim iskustvom u upotrebi solarnih tehnologija,
ODABRALI SMO NAJBOLJE ZA VAS - 100% KVALITET

Protected motto & Text - All rights reserved ©

www.unissgrejanje.com

LPC SERIES - Deep Cycle

LPC12-100 (12V100AH)

Specification

| | | | |
|----------------------------------|--|---|--|
| Nominal Voltage | 12V | | |
| Nominal Capacity(10HR) | 100.0AH | | |
| Dimension | Length | 330±3mm (12.99 inches) | |
| | Width | 173±2mm (6.81 inches) | |
| | Container Height | 212±2mm (8.35 inches) | |
| | Total Height (with Terminal) | 220±2mm (8.66 inches) | |
| Approx Weight | Approx 30.0 Kg (66.2 lbs) | | |
| Terminal | T11 | | |
| Container Material | ABS | | |
| Rated Capacity | 107.2AH/5.36A | (20hr, 1.80V/cell, 25°C/77°F) | |
| | 100.0AH/10.0A | (10hr, 1.80V/cell, 25°C/77°F) | |
| | 87.7AH/17.5A | (5hr, 1.75V/cell, 25°C/77°F) | |
| | 79.5AH/26.5A | (3hr, 1.75V/cell, 25°C/77°F) | |
| | 64.6AH/64.6A | (1hr, 1.60V/cell, 25°C/77°F) | |
| Max. Discharge Current | 1200A (5s) | | |
| Internal Resistance | Approx 4.9mΩ | | |
| Operating Temp. Range | Discharge | :-15~50°C (5~122°F) | |
| | Charge | : 0~40°C (32~104°F) | |
| | Storage | :-15~40°C (5~104°F) | |
| Nominal Operating Temp. Range | 25±3°C (77±5°F) | | |
| Cycle Use | Initial Charging Current less than 30.0A. Voltage | 14.4V~15.0V at 25°C(77°F)Temp. Coefficient -30mV/°C | |
| | Standby Use | No limit on Initial Charging Current Voltage 13.5V~13.8V at 25°C(77°F)Temp. Coefficient -20mV/°C | |
| Capacity affected by Temperature | 40°C (104°F) | 103% | |
| | 25°C (77°F) | 100% | |
| | 0°C (32°F) | 86% | |
| Self Discharge | Leoch LPC series batteries may be stored for up to 6 months at 25°C(77°F) and then a freshening charge is required. For higher temperatures the time interval will be shorter. | | |



Applications

- ◆ Electric tools
- ◆ Vehicle in place of walking
- ◆ Lawn mowers
- ◆ Golf trolleys and golf cart
- ◆ Portable apparatus, lights and instruments;
- ◆ Electric toys
- ◆ Illumination light
- ◆ Fire alarms
- ◆ Portable power
- ◆ Wheelchairs
- ◆ Medical equipments.



Constant Current Discharge (Amperes) at 25 °C (77°F)

| F.V/Time | 10min | 15min | 20min | 30min | 45min | 1h | 2h | 3h | 4h | 5h | 6h | 8h | 10h | 20h |
|------------|-------|-------|-------|-------|-------|------|------|------|------|------|------|------|------|------|
| 1.85V/cell | 146.4 | 123.2 | 107.7 | 77.5 | 61.5 | 49.9 | 31.0 | 24.2 | 19.6 | 15.9 | 13.9 | 11.3 | 9.4 | 5.31 |
| 1.80V/cell | 187.1 | 148.9 | 127.3 | 91.4 | 71.6 | 55.9 | 33.9 | 26.0 | 20.9 | 17.1 | 14.9 | 12.0 | 10.0 | 5.36 |
| 1.75V/cell | 205.6 | 162.6 | 136.9 | 94.9 | 74.3 | 58.5 | 35.1 | 26.5 | 21.4 | 17.5 | 15.3 | 12.2 | 10.1 | 5.41 |
| 1.70V/cell | 224.1 | 173.6 | 143.9 | 98.8 | 77.2 | 60.4 | 36.5 | 27.2 | 22.0 | 18.0 | 15.6 | 12.4 | 10.2 | 5.51 |
| 1.65V/cell | 241.8 | 184.6 | 152.8 | 104.2 | 79.2 | 62.4 | 37.5 | 28.4 | 22.7 | 18.5 | 16.0 | 12.6 | 10.4 | 5.58 |
| 1.60V/cell | 262.5 | 197.4 | 162.8 | 110.0 | 82.5 | 64.6 | 38.8 | 29.3 | 23.4 | 19.1 | 16.3 | 12.7 | 10.5 | 5.61 |

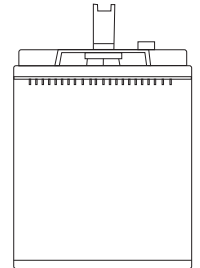
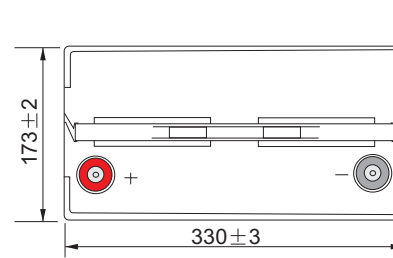
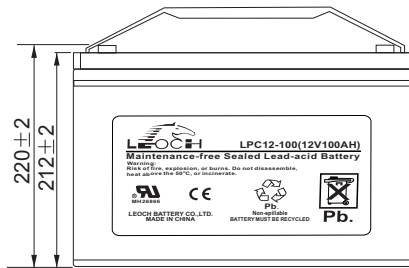
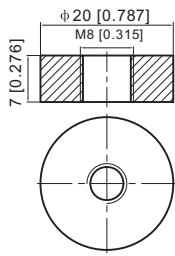
Constant Power Discharge (Watts) at 25 °C (77°F)

| F.V/Time | 10min | 15min | 20min | 30min | 45min | 1h | 2h | 3h | 4h | 5h | 6h | 8h | 10h | 20h |
|------------|-------|-------|-------|-------|-------|-------|------|------|------|------|------|------|------|------|
| 1.85V/cell | 273.2 | 232.3 | 205.2 | 148.8 | 119.0 | 96.9 | 60.4 | 47.2 | 38.4 | 31.3 | 27.4 | 22.4 | 18.7 | 10.6 |
| 1.80V/cell | 344.4 | 276.5 | 238.8 | 173.5 | 137.3 | 107.9 | 65.6 | 50.6 | 40.8 | 33.5 | 29.3 | 23.7 | 19.8 | 10.7 |
| 1.75V/cell | 373.8 | 299.1 | 254.8 | 179.3 | 141.8 | 112.5 | 67.8 | 51.4 | 41.6 | 34.3 | 30.1 | 24.1 | 20.0 | 10.8 |
| 1.70V/cell | 401.7 | 316.9 | 266.3 | 185.8 | 147.0 | 115.7 | 70.3 | 52.7 | 42.6 | 35.1 | 30.7 | 24.5 | 20.2 | 11.0 |
| 1.65V/cell | 430.4 | 334.8 | 281.5 | 195.2 | 150.2 | 119.2 | 72.1 | 54.8 | 44.0 | 36.0 | 31.3 | 24.8 | 20.6 | 11.1 |
| 1.60V/cell | 459.4 | 353.8 | 296.8 | 204.0 | 155.1 | 122.5 | 74.1 | 56.2 | 45.1 | 37.0 | 31.9 | 25.0 | 20.8 | 11.2 |

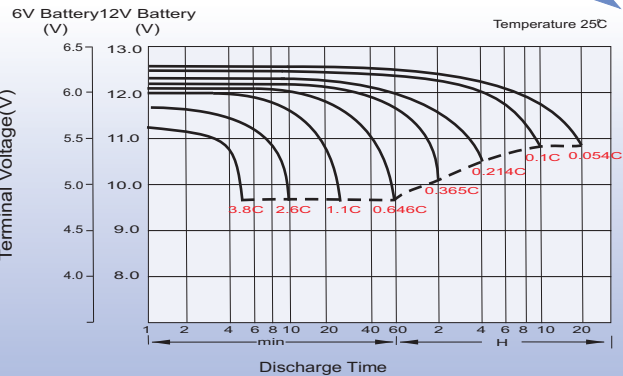
Dimensions

T11 Terminal

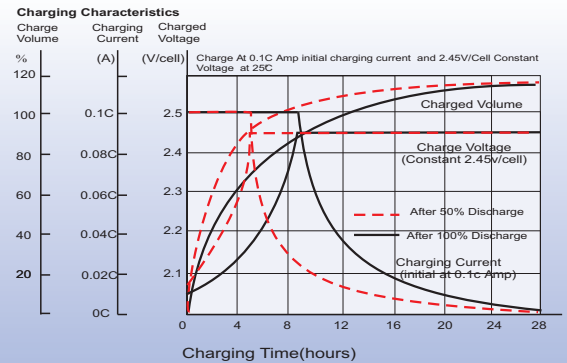
Unit: mm [inches]



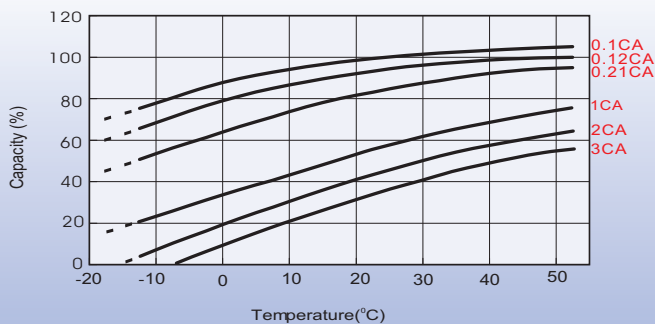
Discharge Characteristics



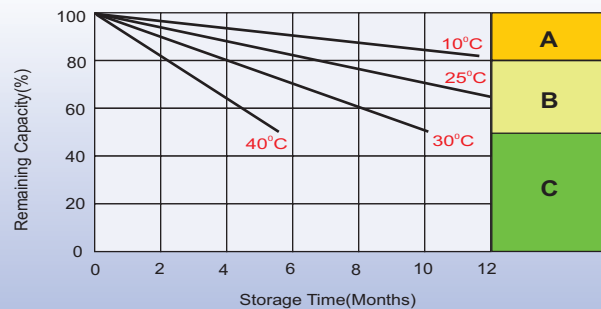
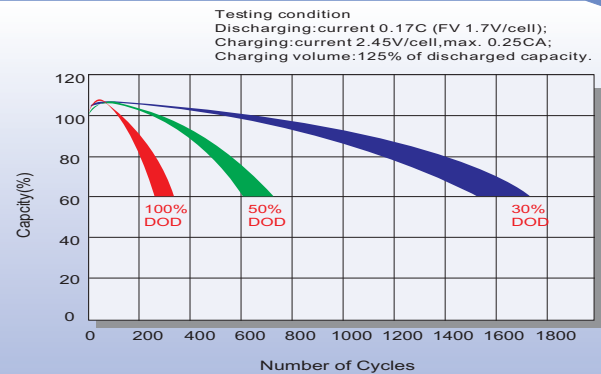
Charging Characteristics (cycle use)



Temperature Effects in Relation to Battery Capacity



Cycle Life in Relation to Depth of Discharge



Self Discharge Characteristics

- A** No supplementary charge required
(Carry out supplementary charge before use if 100% capacity is required.)
- B** Supplementary charge required before use. Optional charging way as below:
 1. Charged for above 3 days at limited current 0.25CA and constant volatge 2.25V/cell.
 2. Charged for above 20hours at limited current 0.25CA and constant volatge 2.45V/cell.
 3. Charged for 8~10hours at limited current 0.05CA .
- C** Supplementary charge may often fail to recover the capacity.
The battery should never be left standing till this is reached.

Sales Office

China sales office:

Add: 5th Floor, Xinbaohui Bldg., Nanhai Blvd.,
Nanshan, Shenzhen, China. 518052
Tel: + 86-755-86036060 (100 lines)
Fax: +86-755-26067269
E-mail: export@leoch.com
Http://www.leoch.com

North Americasales office:

Add: 19751 Descartes, Unit A,
Foothill Ranch, CA 92610, USA
Tel: 949-588-5853
Fax: 949-588-5966
E-mail: sales@leoch.us
Http://www.leoch.us

Europe sales office:

Add: 9B Wheatstone Park, Waterwells
Business Park, Gloucester, GL2 2AQ. UK.
Tel: +44(0) 1452 729428
Fax: +44 (0)1452-690125
E-mail: Sales.Europe@leoch.com
Http://www.leoch.com